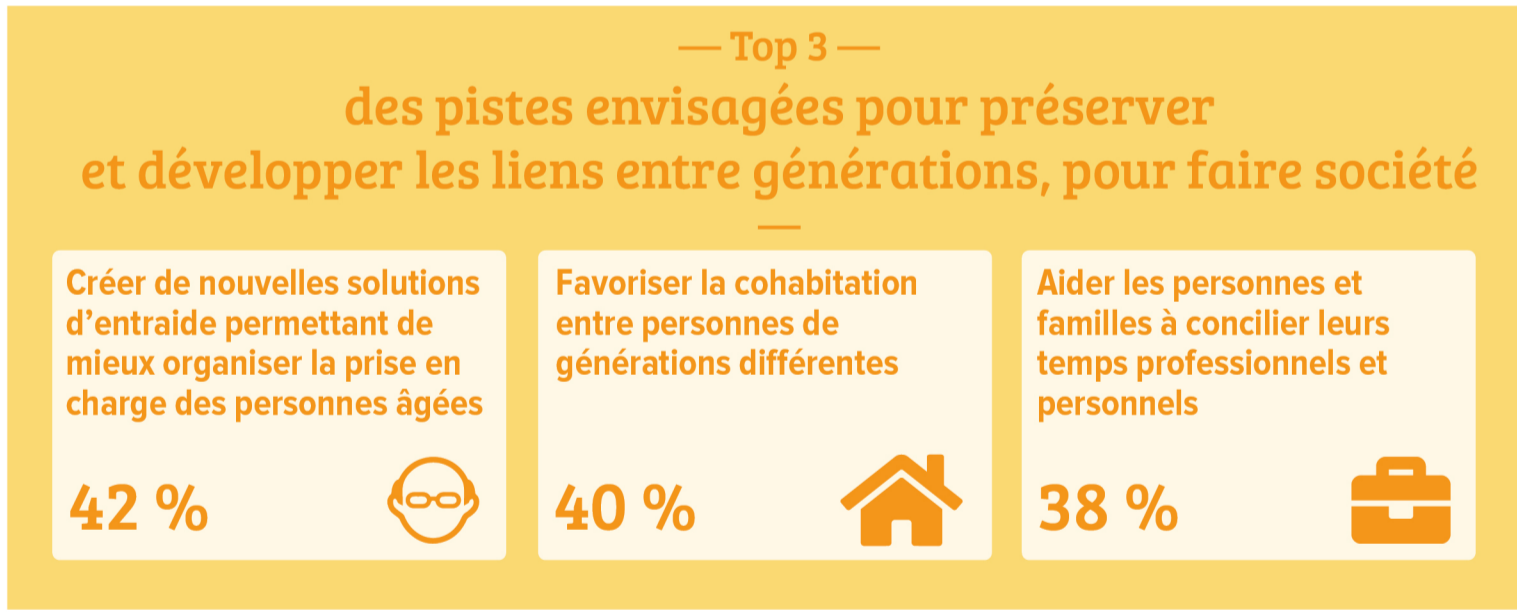
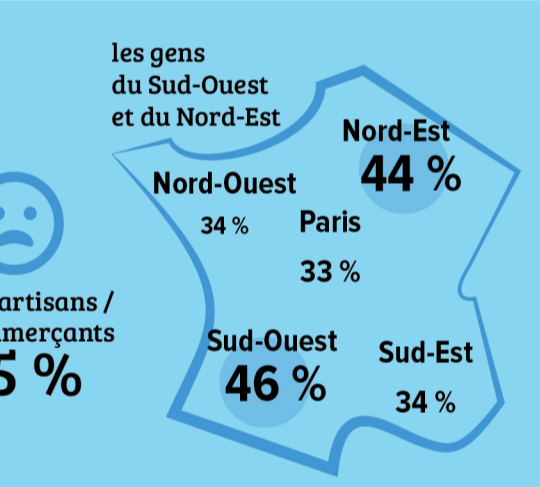
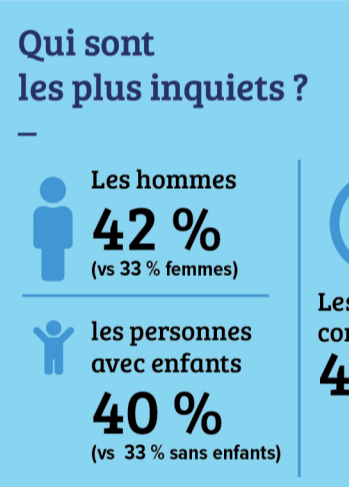
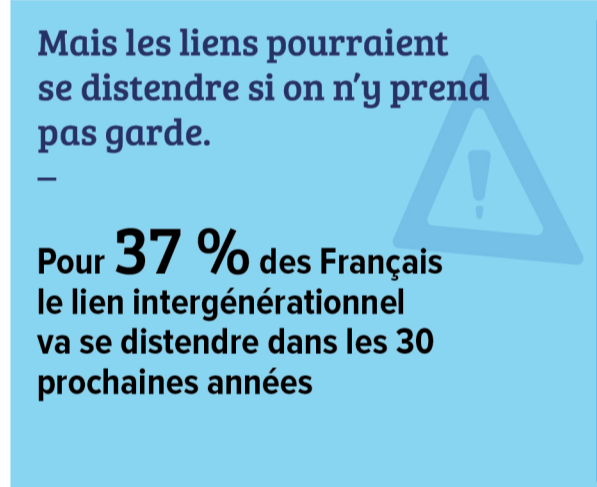
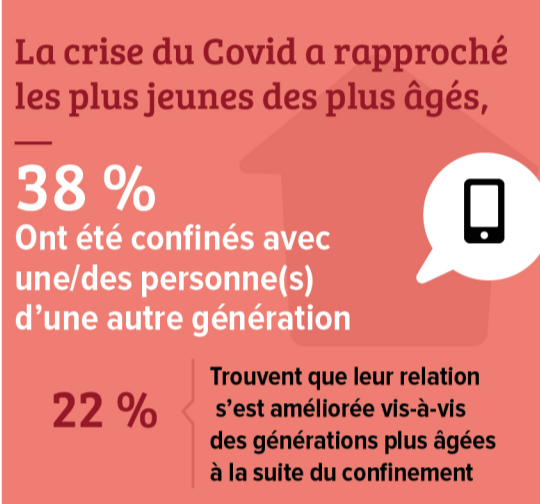
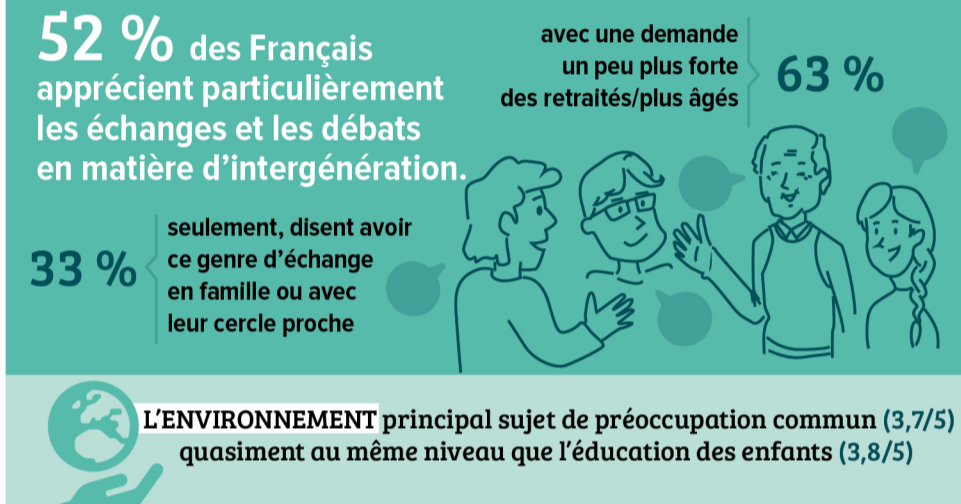
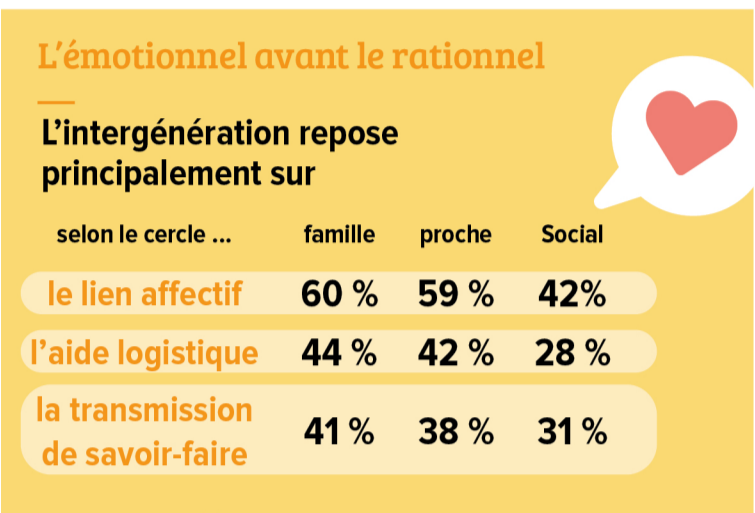
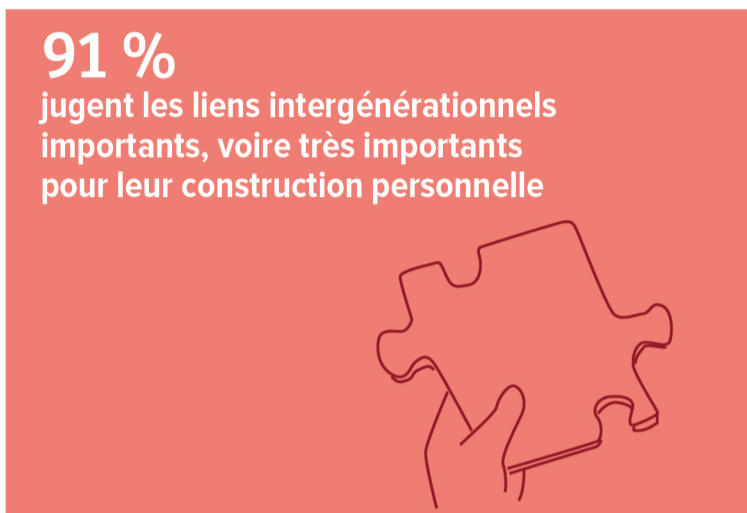
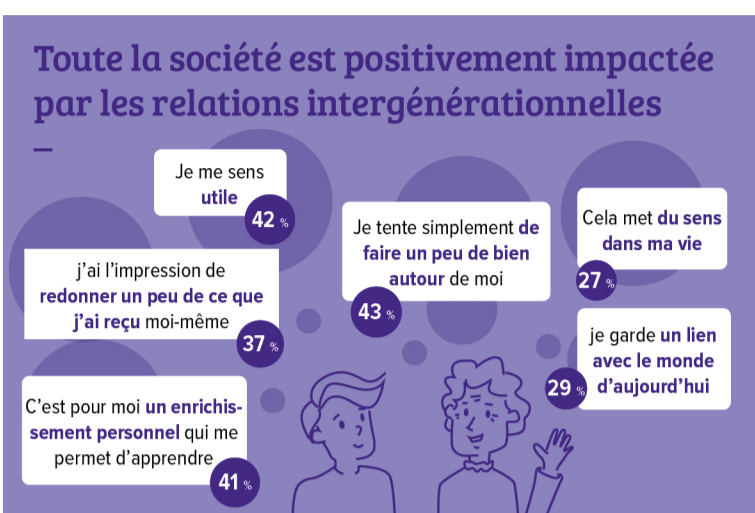
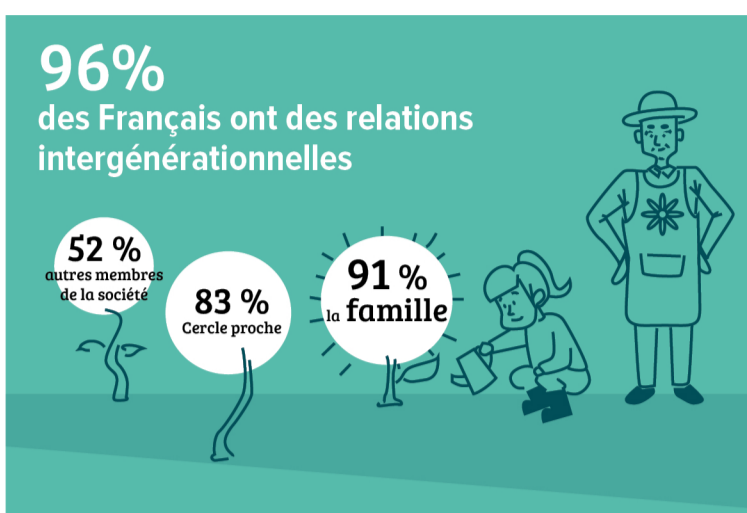


# Cultivons les liens entre générations !



Comment les Français souhaitent-ils s'investir à l'avenir dans leurs relations avec les autres générations ?

	1 <sup>er</sup>	2 <sup>e</sup>	3 <sup>e</sup>
Dans le cercle familial	Transmission de la mémoire <b>30%</b>	Transmission d'un savoir-faire <b>28%</b>	Aide pédagogique <b>28%</b>
Dans le cercle proche	Transmission de la mémoire <b>30%</b>	Transmission d'un savoir-faire <b>29%</b>	Aide pédagogique <b>28%</b>
Dans le cercle social	Activités culturelles bénévoles <b>38%</b>	Transmission de la mémoire <b>33%</b>	Aide logistique <b>33%</b>

